



BUILDING
FOUNDATIONS FOR ALL

Generations

A CAMPAIGN FOR
ST. KATHARINE DREXEL PARISH

MISSION STATEMENT

We, the Amador community of St. Katharine Drexel Parish, are united in our Catholic Faith. Inspired by the Holy Spirit and led by the example of St. Katharine who served the marginalized, we are strengthened by the Eucharist and strive to serve all God's people while evangelizing future generations.

DEAR FRIENDS IN CHRIST,

Four years ago, people were filled with hope and excitement, and some with trepidation, as our new, unified parish was declared by Bishop Soto. From our humble, yet proud beginnings, and with rich history, we've grown into a thriving parish community. By now, you are undoubtedly aware of our urgent need to strengthen youth ministry by hiring a full-time Director of Youth and Young Adult Ministries and constructing a youth and young adult center now underway at the Parish Center. We also need to continue to relieve our parish from debt, and contribute our portion towards the diocesan ONE campaign. We've spent the last year reviewing our facilities and updating our long-range plan. We've moved prudently, seeking professional guidance every step of the way. We've sought and received parishioner input and direction on how to best implement our master plan.

As we begin the *Building Foundations For All Generations* Capital Campaign, I ask you prayerfully to consider supporting this effort. We will be praying our Campaign Prayer repeatedly over the next several months. As you contemplate your gift, please think about what an asset and blessing your Catholic Faith is to you and your family. Think of those who before us who worked tirelessly and made many sacrifices to make our community what it is today. We have built our parish with God's grace and now we must keep moving forward to build foundations for all generations to come. I ask you to consider the kind of impact you will make.

I am very hopeful about the future of our parish and I am convinced that God will continue to be faithful to us and will guide us with his grace so that, together, we will be the extraordinary community of dynamic Catholics that he desires us to be.

SINCERELY,
REV. LARRY BECK
P A S T O R

Letter from Father

HISTORY OF ST. KATHARINE DREXEL CATHOLIC PARISH AND PLANNING PROCESS TIMELINE

1999

The Catholic faithful of Amador County wrestled with how to best meet the future needs of our community. In that year, Bishop William Weigand established a Tri-Parish Committee with representation from the former Immaculate Conception, Sacred Heart of Jesus, and St. Patrick Parishes.

2004

Bishop Weigand charged the Tri-Parish committee membership with specific tasks. Conduct a demographic study of the three Amador County Parishes including population centers. Develop a tri-parish Pastoral plan to serve all Amador County churches. Identify one or more sites that would meet the future needs of Amador County Catholics, with collaboration between parishes of high priority, and the need to assure that we pass on our Catholic Faith as effectively as possible.

2010

A forward looking group succeeded in securing the purchase of the former Prospect Motors facility in Martell. A Steering Committee with equal representation from the three county parishes was established to undertake a feasibility study and then a capital campaign, and manage the completion of design plans and construction improvements to the former car dealership, now St. Katharine Drexel Parish Center.

2011

Bishop Soto declares new, unified St. Katharine Drexel Parish merging the three historic parishes of Amador County on Nov. 30.

2013

On April 7, the new mother church of the parish, St. Katharine Drexel was dedicated after years of planning and months of construction renovations. This new church, located at the Parish Center, can seat 700. The Parish Center also houses facilities for group activities, a social hall, a commercial kitchen, gymnasium, and numerous meeting rooms, in addition to the parish offices.

PRESENT

St. Katharine Drexel Parish begins a Capital Campaign with three objectives: to fully realize the 2015-2016 Youth Ministry Initiative, to reduce our debt burden and remain strong and present for future generations, and to share in the work of our wider Catholic Community by participating in the Diocese of Sacramento's ONE campaign.

GOALS AND

HERE THEY ARE BUILDING
WHILE STRENGTHENING

YOUTH AND YOUNG ADULT CENTER

\$60,000

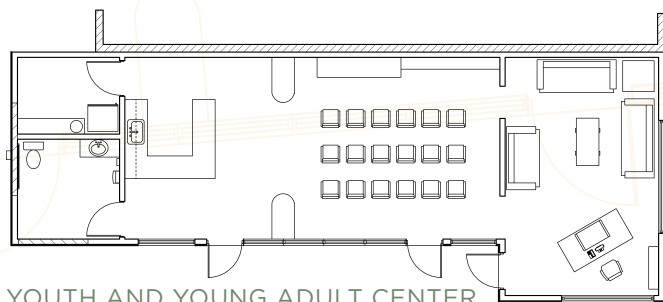
To meet the needs of our expanding youth and young adult ministry programs, this winter the parish was advanced funds to proceed with renovation of the rooms adjacent to the covered breezeway at the Parish Center in Martell. The new 1,050 square foot center provides a safe, supervised, and welcoming place our youth and young adults can call their own. Here they are building relationships in Christ, while strengthening their Catholic faith.

The space features essential elements of successful, modern youth centers: youth room, meeting and prayer room, kitchenette, storage and restroom. One end features an informal and friendly, living-room style area and a work station to accommodate a Director of Youth and Young Adult Ministries. A central gathering area provides seating for more than 30 youth for teaching, prayer, group and after-school activities, along with WIFI, multimedia and internet connection. A kitchenette, storage and pantry closet—complete with a sink, microwave, full-sized refrigerator, espresso and cappuccino maker—provides the natural accompaniment of food and refreshments for youth and young adult activities. The adjacent Parish Center provides nearby amenities for much larger events with its gymnasium, commercial kitchen and social hall.

DEBT REDUCTION

\$410,000

When we look to the future of our parish we must look at what we can do to secure it. Financial costs will always exist with these endeavors. It is important that we take note of those costs and work to reduce the burden they place on our community. We are blessed to have a thriving parish that allows us to grow in faith. Thanks to all of those who contributed to the “Honoring Our Past, Uniting in Faith” capital campaign, a large portion of the cost has already been removed. This campaign will pay a portion of the remaining debt burden that was accumulated during the building purchase and renovation to bring St. Katharine Drexel to its current thriving state. Even though this is just a portion of the remaining debt, it is a step toward financial freedom and stability for our Catholic community.



YOUTH AND YOUNG ADULT CENTER

COST ESTIMATES

RELATIONSHIPS IN CHRIST,
THEIR CATHOLIC FAITH.



I am proud to be a part of the St. Katharine Drexel community. As a mother of two children I am constantly looking to what the future will hold for them. I want my children, and all of our children, to always be present and active in their faith. Therefore, I believe that it is important to have a central, welcome, open, and inviting place where they can share their faith and therefore grow in that faith as individuals and as members of this amazing community.

Amy Faist

THE ONE CAMPAIGN CONTRIBUTION \$350,000

As a part of a larger Catholic community, we understand the importance of supporting the wider church. This support is important to the continued growth and strength of the Catholic community. Bishop Soto shared his strategic plan with the community, focusing on six areas of need crucial to our future: youth ministry, education, pastoral care, communication, service, and parish community. With the understanding that each parish has unique needs, the campaign will strengthen the entire community, but individual parishes as well. This is done by expanding community support, evangelization through communication, an opportunity for our retired priests to live independently, striving to be the best school in every neighborhood, and fostering a culture of faith formation through youth ministry.

Our parish contribution will be allocated toward the youth ministry focus of the ONE campaign. We have a great opportunity to not only strengthen youth ministry locally, but also contribute to the broader goal of engaging, evangelizing and teaching our children and young adults about the Catholic faith.

C A M P A I G N G O A L

\$ 8 2 0 , 0 0 0

PARISH CLERGY

Rev. Larry Beck
Rev. Thomas Relihan
Rev. Eric Flores
Deacon Ed Pogue
Deacon Jaime Garcia

CAMPAIGN LEADERSHIP

General Chairs
John and Connie Gonsalves
Kerry Maxedon
Bob Strazzo
Matt and Ellen Waverly
Manny Villegas
Amy Faist
Bo Felix

BUDGETING YOUR GIFT

OVER THE THREE-YEAR
PLEDGE PERIOD

Pledge	Initial 10%	Balance	Monthly	Quarterly	Semi-Annually	Annually
\$100,000	\$10,000	\$90,000	\$2,500	\$7,500	\$15,000	\$30,000
\$50,000	\$5,000	\$45,000	\$1,250	\$3,750	\$7,500	\$15,000
\$25,000	\$2,500	\$22,500	\$625	\$1,875	\$3,750	\$7,500
\$15,000	\$1,500	\$13,500	\$375	\$1,125	\$2,250	\$4,500
\$12,000	\$1,200	\$10,800	\$300	\$900	\$1,800	\$3,600
\$9,000	\$900	\$8,100	\$225	\$675	\$1,350	\$2,700
\$7,500	\$750	\$6,750	\$188	\$563	\$1,125	\$2,250
\$6,000	\$600	\$5,400	\$150	\$450	\$900	\$1,800
\$3,000	\$300	\$2,700	\$75	\$225	\$450	\$900
\$1,500	\$150	\$1,350	\$38	\$113	\$225	\$450



“

I am extremely excited about our youth ministry growing, and we will see that with the new youth center and youth minister coming to our parish. We all understand that we have debt to repay for our beautiful church, which we are on our way of accomplishing, and the diocesan ONE Campaign will benefit our entire Catholic Faith community for years to come.

”

Kerry Maxedon



METHODS OF GIVING

PLEDGES

A campaign pledge is an agreement to fulfill a financial commitment over a period of time. To maximize the funding potential which may exist within our community, we are asking all of our families to consider a three-year commitment in support of the *Building Foundations For All Generations* Capital Campaign. Pledges are obligations made in good faith, but are not legally binding. Pledge payments are tax deductible, as provided by law.

CHECKS OR CASH

are the most common form of payment, but St. Katharine Drexel Catholic Parish also graciously accepts gifts in various forms including:

APPRECIATED SECURITIES

Appreciated stock gifts offer advantageous tax savings.

CORPORATE MATCHING GIFTS

A matching gifts program through your employer or board membership may allow you to increase the value of your gift. Many companies match charitable gifts of employees, retirees or board members. Check with your employer to see if there is a matching program available to increase your gift to the campaign.

OTHER METHODS OF GIVING

Bonds and Mutual Funds

Life Insurance

Charitable Remainder Trust

Real Estate

Deferred or Planned Gifts

Gifts in-Kind

Retirement Plans





CAMPAIGN PRAYER

LOVING FATHER,

We give you thanks and praise for the many blessings you have poured out upon our parish.

We thank you for every person, living and deceased, who has helped provide for the firm foundation on which we now stand.

You have chosen to increase our community abundantly.

We believe our goals are rooted in your holy Word and inspired by your Spirit.

Bless us with generous hearts, open minds, and helping hands as we grow in faith and serve the community, now and for future generations. We ask this through Christ, our Lord.

AMEN

“

This campaign is important for our Parish here at St. Katharine Drexel because it will assist us in giving our youth a gathering place, to focus on our Faith and be able to share with our community a wonderful facility that all can enjoy.

”

Connie Gonsalves

